

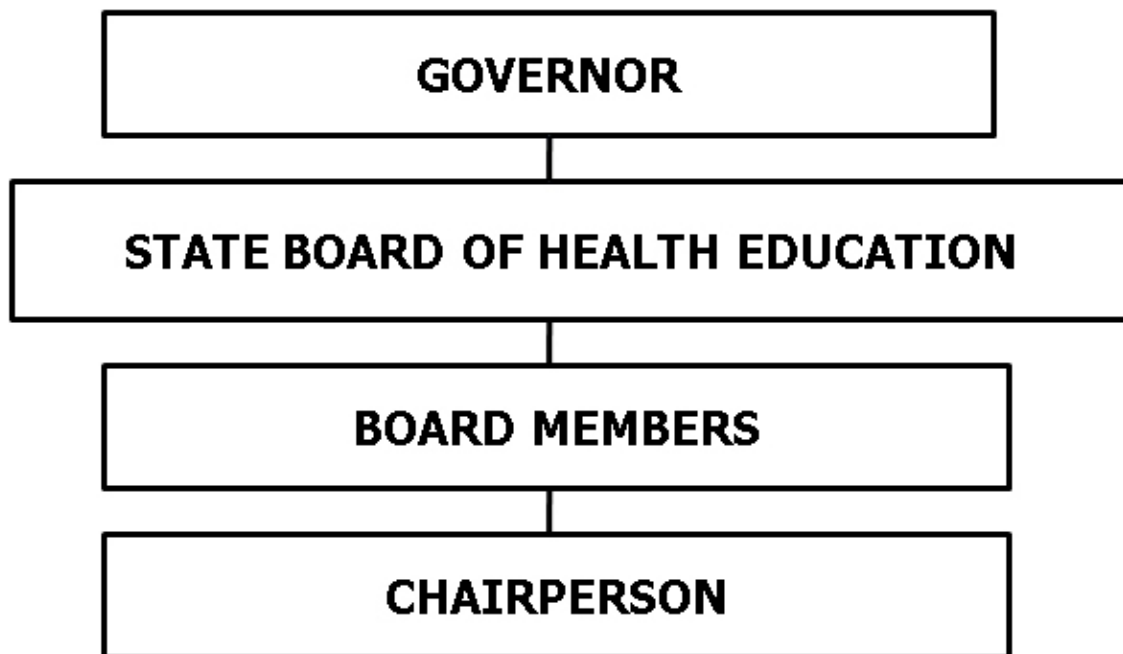
ARKANSAS BOARD OF HEALTH EDUCATION

Enabling Laws

Act 34 of 2007
A.C.A. §17-53-101

History and Organization

The State Board of Health Education, authorized by A.C.A. §17-53-101 et seq., certifies and regulates persons engaged in the practice of health education. The Board is comprised of seven members appointed by the Governor and confirmed by the Senate who serve three year terms. The Board is a Cash Agency funded from fees used for operating expenses.



Agency Commentary

Agency Request is Base Level for each year of the 2009-11 biennium.

Audit Findings

DIVISION OF LEGISLATIVE AUDIT
AUDIT OF :
ARKANSAS BOARD OF HEALTH EDUCATION

FOR THE YEAR ENDED JUNE 30, 2005

Findings

The Board did not issue prenumbered receipts or prepare a cash log for license registration and renewal fees collected totaling \$691 for the two-year period ended June 30, 2005, as required by the State Financial Management Guide (Section R4-19-4-501). Also, fees collected were not deposited in a timely manner and intact.

Recommendations

Issue prenumbered receipts or prepare a cash log for fees collected and deposit all revenues collected in a timely manner and intact as required by State policy.

Cash Fund Balance Description as of June 30, 2008

Fund Account	Balance	Type	Location
3190000	\$4,809	Checking	Bank of America

Statutory/Other Restrictions on use:

A.C.A. §17-53-203 - Make expenditure for any purpose reasonable and necessary to carry out the provisions of this chapter.

Statutory Provisions for Fees, Fines, Penalties:

A.C.A. §17-53-105 - Violations shall be deemed a Class A misdemeanor.

Revenue Receipts Cycle:

Fees are received throughout the year.

Fund Balance Utilization:

For payment of expenses throughout the year as necessary.

Publications

A.C.A. 25-1-204

Name	Statutory Authorization	Required for		# of Copies	Reason(s) for Continued Publication and Distribution
		Governor	General Assembly		
None	N/A	N	N	0	N/A

Agency Position Usage Report

FY2006 - 2007						FY2007 - 2008						FY2008 - 2009					
Authorized in Act	Budgeted			Unbudgeted	% of Authorized Unused	Authorized in Act	Budgeted			Unbudgeted	% of Authorized Unused	Authorized in Act	Budgeted			Unbudgeted	% of Authorized Unused
	Filled	Unfilled	Total	Total			Filled	Unfilled	Total	Total			Filled	Unfilled	Total	Total	
0	0	0	0	0	0.00 %	0	0	0	0	0	0.00 %	0	0	0	0	0	0.00 %

Analysis of Budget Request

Appropriation: B79 - Board of Health Education

Funding Sources: 319 - Board of Health Education-Cash

The State Board of Health Education, authorized by A.C.A. §17-53-101 et seq., certifies and regulates persons engaged in the practice of health education. The Board is comprised of seven members serving three year terms. Board members are appointed by the Governor and confirmed by the Senate. The Board is a cash funded agency and collects fees from the certification of health education personnel. The revenue collected from such fees are used for the operating expenses of the Board.

The Board requests Base Level of \$5,592 each year of the 2009-11 biennium.

The Executive Recommendation provides for Base Level each year of the 2009-2011 biennium. Expenditure of appropriation is contingent upon available funding.

Appropriation Summary

Appropriation: B79 - Board of Health Education

Funding Sources: 319 - Board of Health Education-Cash

Historical Data

Agency Request and Executive Recommendation

Commitment Item		Historical Data			2009-2010			2010-2011		
		2007-2008 Actual	2008-2009 Budget	2008-2009 Authorized	Base Level	Agency	Executive	Base Level	Agency	Executive
Operating Expenses	5020002	100	5,592	5,592	5,592	5,592	5,592	5,592	5,592	5,592
Conference & Travel Expenses	5050009	0	0	0	0	0	0	0	0	0
Professional Fees	5060010	0	0	0	0	0	0	0	0	0
Data Processing	5090012	0	0	0	0	0	0	0	0	0
Capital Outlay	5120011	0	0	0	0	0	0	0	0	0
Total		100	5,592	5,592	5,592	5,592	5,592	5,592	5,592	5,592
Funding Sources										
Fund Balance	4000005	4,782	4,809		0	0	0	0	0	0
Cash Fund	4000045	127	783		783	783	783	783	783	783
Total Funding		4,909	5,592		783	783	783	783	783	783
Excess Appropriation/(Funding)		(4,809)	0		4,809	4,809	4,809	4,809	4,809	4,809
Grand Total		100	5,592		5,592	5,592	5,592	5,592	5,592	5,592