

SPEECH-LANGUAGE PATHOLOGY & AUDIOLOGY

Enabling Laws

Act 500 of 2007
A.C.A. §17-100-101 et seq.

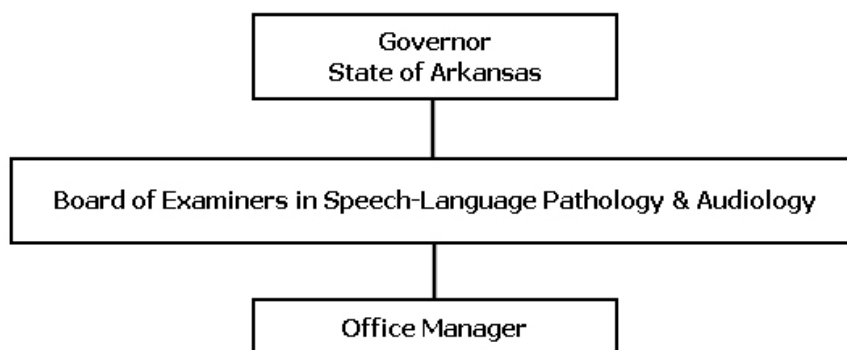
History and Organization

The Arkansas Board of Examiners in Speech-Language Pathology and Audiology (ABESPA) was formed in 1975 through enabling legislation, Act 277. Act 121 revised parts of the original legislation in 1993. In 1995 Act 826 was passed allowing use of speech-language pathology assistants. Rules and Regulations were last revised effective June 12, 2005.

The Board is composed of eight (8) members. These include five (5) professionals in Speech Pathology and Audiology (at least 2 from each field), a consumer representative, a public representative, and a senior citizen. The members are appointed by the Governor for three (3) year terms. A member may serve two (2) full consecutive terms.

The mission of this Board is to help assure the availability of the highest possible quality speech-language pathology and audiology services to the communicatively handicapped people of this State by strict licensing requirements and mandatory continuing professional education and to protect the public from being misled by incompetent, unscrupulous, and unauthorized persons and from unprofessional conduct on the part of qualified speech-language pathologists and audiologists.

ABESPA examines the credentials and qualifications of Speech Pathologists, Speech Pathology Assistants, and Audiologists who wish to provide services to the citizens of Arkansas. A license or registration is issued to those individuals who meet the qualifications. After licensure, each professional is required to meet mandatory continuing education requirements, which are monitored by the Board. ABESPA also acts on behalf of consumers by investigating complaints, conducting hearings, and taking disciplinary action, when warranted, to ensure that quality Speech-Language Pathology and Audiology services are delivered.



Agency Commentary

Granting and maintaining licenses and registrations for Speech-Language Pathologists, Speech Pathology Assistants, and Audiologists is an ongoing function of the Board of Examiners in Speech-Language Pathology and Audiology according to A.C.A. §17-100-101 et seq. The operations of the Board, which includes one full-time employee and one part-time extra help position, are funded from the receipt of fees charged by the Agency.

The Board is requesting Base Level appropriation for this biennium.

Audit Findings

DIVISION OF LEGISLATIVE AUDIT
AUDIT OF :
STATE BOARD OF EXAMINERS IN SPEECH-LANGUAGE PATHOLOGY AND AUDIOLOGY
FOR THE YEAR ENDED JUNE 30, 2007

Findings	Recommendations
None	None

Employment Summary

	Male	Female	Total	%
White Employees	0	1	1	100 %
Black Employees	0	0	0	0 %
Other Racial Minorities	0	0	0	0 %
Total Minorities			0	0 %
Total Employees			1	100 %

Cash Fund Balance Description as of June 30, 2008

Fund Account	Balance	Type	Location
3290000	\$545,826	Checking, State Treasury	Bank of America, State Treasury

Statutory/Other Restrictions on use:

A.C.A. §17-100-206 - All fees and other funds received by the Board of Examiners in Speech-Language Pathology and Audiology shall be deposited in a bank account in the name of the board in one or more banks in this state and shall be used by the board exclusively for payment of reasonable and necessary salaries, maintenance, and operating expenses.

Statutory Provisions for Fees, Fines, Penalties:

A.C.A. §17-100-206 - The Board shall be financed from income accruing to it from fees, licenses, and other charges collected by the board, and have the authority to establish and change fees.

Revenue Receipts Cycle:

Revenue is collected throughout the year; however, most of the fees are collected during renewal time in the month of June.

Fund Balance Utilization:

Since the largest proportion of fees are collected at the end of the fiscal year, funds are carried over for use in carrying out the business of the office.

Publications

A.C.A. 25-1-204

Name	Statutory Authorization	Required for		# of Copies	Reason(s) for Continued Publication and Distribution
		Governor	General Assembly		
Consumer Information Brochure	ABESPA Rules & Regulations Section 1.8	N	N	250	Provided to all licensees for use in offices and clinics.
Licensure Directory	ABESPA Rules & Regulations Section 1.8	N	N	1,800	Required by rules and regulations for use by licensees and others

Agency Position Usage Report

FY2006 - 2007						FY2007 - 2008						FY2008 - 2009					
Authorized in Act	Budgeted			Unbudgeted	% of Authorized Unused	Authorized in Act	Budgeted			Unbudgeted	% of Authorized Unused	Authorized in Act	Budgeted			Unbudgeted	% of Authorized Unused
	Filled	Unfilled	Total	Total			Total	Total	Filled	Unfilled			Total	Total	Filled	Unfilled	
1	1	0	1	0	0.00 %	1	1	0	1	0	0.00 %	1	1	0	1	0	0.00 %

Analysis of Budget Request

Appropriation: A12 - Cash Operations

Funding Sources: 329 - Speech-Language Pathology and Audiology - Cash

The Arkansas Board of Examiners in Speech-Language Pathology and Audiology was created by A.C.A. § 17-100-201, to safeguard the public health, safety, and welfare by providing regulatory authority over persons offering Speech-Language Pathology and Audiology services to the citizens of Arkansas. The Board is a cash agency funded from application, examination and license renewal fees charged pursuant to A.C.A. §17-100-206.

Base Level positions were changed from unclassified to classified to reflect the recommendations of the Pay Plan Study and salaries were adjusted accordingly. A 2.3% Cost of Living Allowance is reflected in the second year of the biennium. The Base Level request for Regular Salaries may include board member Stipend payments and Career Service payments for eligible employees. Personal Services Matching includes a \$75 increase in the monthly contribution for State employee's health insurance for a total State match per budgeted employee of \$425.

The Agency requests Base Level of \$124,355 in FY10 & \$125,774 in FY11.

The Executive Recommendation provides for the Agency Request. Expenditure of appropriation is contingent upon available funding.

Appropriation Summary

Appropriation: A12 - Cash Operations

Funding Sources: 329 - Speech-Language Pathology and Audiology - Cash

Historical Data

Agency Request and Executive Recommendation

Commitment Item		Historical Data			Agency Request and Executive Recommendation			2010-2011		
		2007-2008 Actual	2008-2009 Budget	2008-2009 Authorized	2009-2010			Base Level	Agency	Executive
Regular Salaries	5010000	48,146	47,042	46,442	48,203	48,203	48,203	49,397	49,397	49,397
#Positions		1	1	1	1	1	1	1	1	1
Extra Help	5010001	3,615	6,000	6,000	6,000	6,000	6,000	6,000	6,000	6,000
#Extra Help		1	1	1	1	1	1	1	1	1
Personal Services Matching	5010003	14,219	13,437	14,068	14,586	14,586	14,586	14,811	14,811	14,811
Operating Expenses	5020002	33,924	47,516	47,516	47,516	47,516	47,516	47,516	47,516	47,516
Conference & Travel Expenses	5050009	810	3,250	3,250	3,250	3,250	3,250	3,250	3,250	3,250
Professional Fees	5060010	2,287	4,800	4,800	4,800	4,800	4,800	4,800	4,800	4,800
Data Processing	5090012	0	0	0	0	0	0	0	0	0
Capital Outlay	5120011	0	0	0	0	0	0	0	0	0
Total		103,001	122,045	122,076	124,355	124,355	124,355	125,774	125,774	125,774

Funding Sources										
Fund Balance	4000005	433,898	545,826		595,830	595,830	595,830	643,524	643,524	643,524
Cash Fund	4000045	214,929	172,049		172,049	172,049	172,049	172,049	172,049	172,049
Total Funding		648,827	717,875		767,879	767,879	767,879	815,573	815,573	815,573
Excess Appropriation/(Funding)		(545,826)	(595,830)		(643,524)	(643,524)	(643,524)	(689,799)	(689,799)	(689,799)
Grand Total		103,001	122,045		124,355	124,355	124,355	125,774	125,774	125,774

The FY08 Actual amount and FY09 Budget amount in Regular Salaries exceeds the authorized amount due to salary adjustments during the 2007-2009 biennium.

The FY08 Actual amount in Personal Services Matching exceeds the authorized amount due to salary adjustments during the 2007-2009 biennium.