

ARKANSAS WHEAT PROMOTION BOARD

Enabling Laws

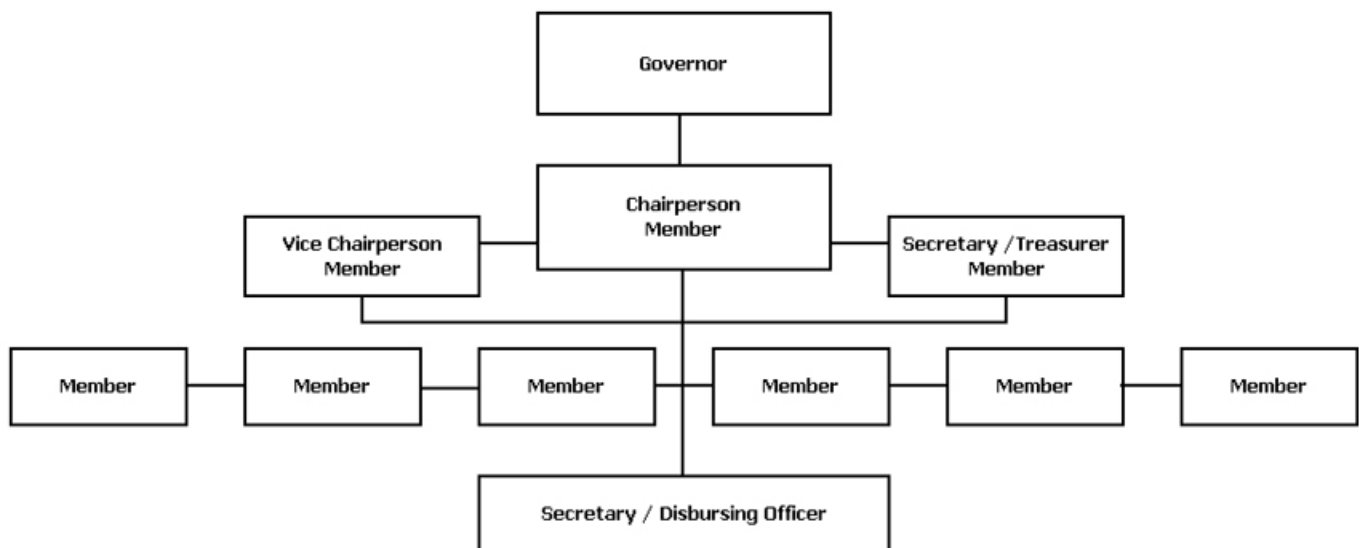
Act 10 of 2007
A.C.A. §2-20-604 et seq.

History and Organization

The Arkansas Wheat Promotion Board was created by Act 283 of 1985. The mission is to promote the growth and development of the wheat industry in Arkansas by research, extension, promotion and market development, thereby promoting the general welfare of the people of Arkansas.

The Board is made up of nine members appointed by the Governor. Three are nominated by and represent the Arkansas Farm Bureau Federation, and two each are nominated by and represent Riceland Foods, Inc., the Agriculture Council of Arkansas, and the Arkansas Association of Wheat Growers. The Board is administered by the Executive Vice President of Arkansas Farm Bureau Federation or his designee.

The Board administers a one cent per bushel assessment on all wheat grown in Arkansas for market. The assessment is collected at the first point of sale by the Arkansas State Miscellaneous Tax Department. The funds enter the State Treasury, and are disbursed by the Board to fund wheat research and promotion efforts.



Agency Commentary

The budget request of the Arkansas Wheat Promotion Board is funded entirely by special revenues collected from a one cent per bushel check off on all wheat produced in Arkansas.

The Agency's 2009-11 Biennial Budget Request is a continuation of Base Level. An allocation of these special revenue funds will be used to fund wheat related research projects through the University of Arkansas and private research companies as the Board sees fit. Projects are individually approved and monitored by the Board. The Board welcomes project proposals at the first quarter meeting, usually held in August.

Audit Findings

DIVISION OF LEGISLATIVE AUDIT
AUDIT OF :
ARKANSAS WHEAT PROMOTION BOARD
FOR THE YEAR ENDED JUNE 30, 2007

Findings	Recommendations
None	None

Publications

A.C.A. 25-1-204

Name	Statutory Authorization	Required for		# of Copies	Reason(s) for Continued Publication and Distribution
		Governor	General Assembly		
None	N/A	N	N	0	N/A

Agency Position Usage Report

FY2006 - 2007						FY2007 - 2008						FY2008 - 2009					
Authorized in Act	Budgeted			Unbudgeted	% of Authorized Unused	Authorized in Act	Budgeted			Unbudgeted	% of Authorized Unused	Authorized in Act	Budgeted			Unbudgeted	% of Authorized Unused
	Filled	Unfilled	Total	Total			Filled	Unfilled	Total	Total			Filled	Unfilled	Total	Total	
0	0	0	0	0	0.00 %	0	0	0	0	0	0.00 %	0	0	0	0	0	0.00 %

Analysis of Budget Request

Appropriation: 999 - Arkansas Wheat Promotion

Funding Sources: SWP - Arkansas Wheat Promotion Fund

The purpose of the Arkansas Wheat Promotion Board is to promote the growth and development of the wheat industry in the State of Arkansas.

The Wheat Promotion Board is funded entirely by Special Revenue collected from a one cent per bushel assessment on all wheat grown in Arkansas. The funds are primarily used to maintain a program of research through the University of Arkansas Agricultural Experiment Station and Cooperative Extension Service and to support domestic and export promotion programs through memberships in national wheat promotion organizations. A small portion is used for other programs designed to enhance the Arkansas wheat industry.

The Agency is requesting Base Level appropriation of \$791,871 each year of the biennium.

The Executive Recommendation provides for the Agency Request.

Appropriation Summary

Appropriation: 999 - Arkansas Wheat Promotion
Funding Sources: SWP - Arkansas Wheat Promotion Fund

Historical Data

Agency Request and Executive Recommendation

Commitment Item		Historical Data			2009-2010			2010-2011		
		2007-2008 Actual	2008-2009 Budget	2008-2009 Authorized	Base Level	Agency	Executive	Base Level	Agency	Executive
Operating Expenses	5020002	5,272	10,000	10,000	10,000	10,000	10,000	10,000	10,000	10,000
Conference & Travel Expenses	5050009	0	0	0	0	0	0	0	0	0
Professional Fees	5060010	0	0	0	0	0	0	0	0	0
Data Processing	5090012	0	0	0	0	0	0	0	0	0
Capital Outlay	5120011	0	0	0	0	0	0	0	0	0
Research/Development	5900031	264,039	781,871	781,871	781,871	781,871	781,871	781,871	781,871	781,871
Total		269,311	791,871	791,871	791,871	791,871	791,871	791,871	791,871	791,871
Funding Sources										
Fund Balance	4000005	27,909	55,480		0	0	0	0	0	0
Special Revenue	4000030	296,882	736,391		791,871	791,871	791,871	791,871	791,871	791,871
Total Funding		324,791	791,871		791,871	791,871	791,871	791,871	791,871	791,871
Excess Appropriation/(Funding)		(55,480)	0		0	0	0	0	0	0
Grand Total		269,311	791,871		791,871	791,871	791,871	791,871	791,871	791,871