

ARKANSAS GEOLOGICAL COMMISSION

Enabling Laws

Act 1783 of 2005

A.C.A. §15-5-201, et seq.

A.C.A. §15-55-208, et seq.

History and Organization

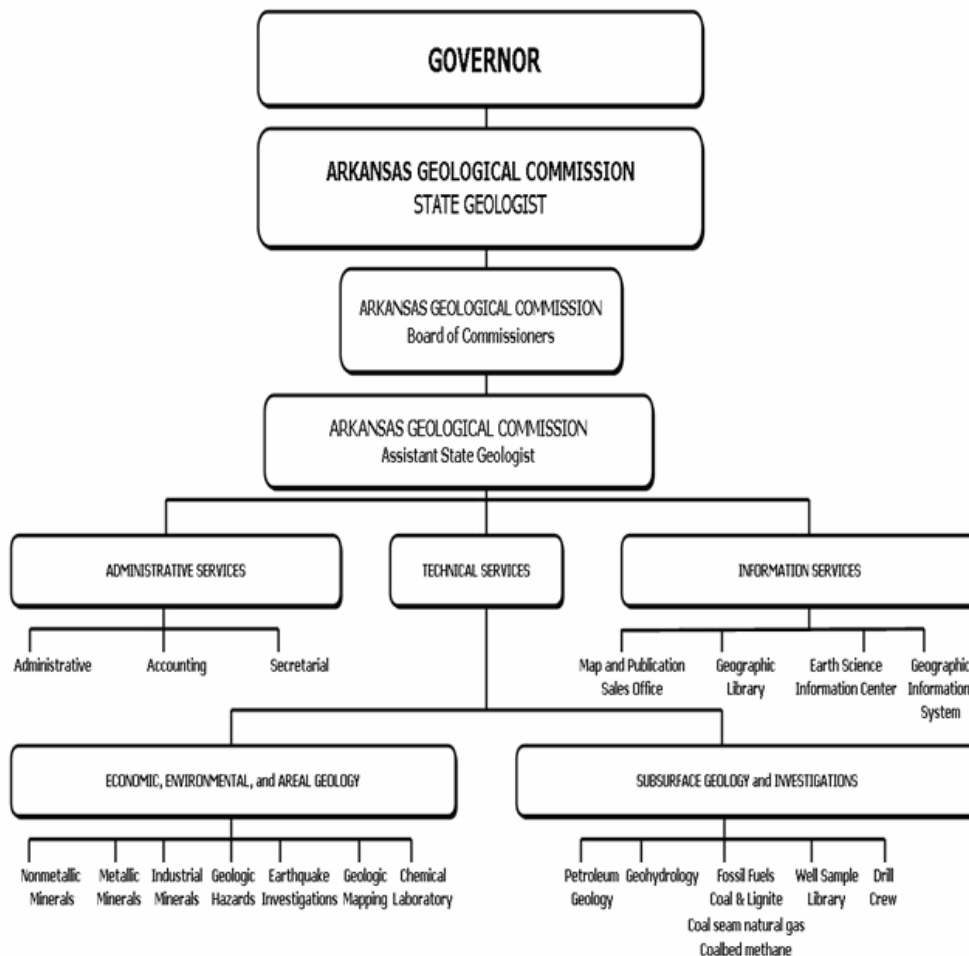
The first geologic surveys made from state-appropriated funds go back to 1857-60. A second survey was made from 1871-74. In 1881, the Geological Survey of Arkansas was established under the direction of Dr. John C. Branner and lasted until 1893. During this period, Herbert Clark Hoover, who later became President of the United States, assisted Dr. Branner. For the next 30 years, the Department of Geology conducted a few geologic surveys at the University of Arkansas. In 1923 the Geological Survey of Arkansas was once again established by Act 573 of 1923 under the direction of George C. Branner, the son of John Branner. In 1945, reorganization changed the agency name to the Arkansas Resources and Development Commission, Division of Geology, under the direction of Harold B. Foxhall. From 1951 to 1995 Norman F. Williams was Director and State Geologist. Another reorganization in 1955 established the agency as the Arkansas Geological and Conservation Commission. In 1995, William V. Bush became Director and State Geologist and was succeeded by Mac B. Woodward in 2003. In January 2005 Bekki White was appointed Director and State Geologist.

The Arkansas Geological Commission is organized into three sections: Administrative Services, Information Services, and Technical Services, all of which are under the direct supervision of the State Geologist. The primary purpose of the Arkansas Geological Commission is to increase the knowledge of the geology of the State, and to stimulate the orderly development and utilization of the State's mineral, water, and fossil fuel resources, while protecting the environment.

The Administrative Services Section consists of administrative, accounting, and secretarial services, and provides all the administrative support for the agency. The Information Services Section's primary function is the distribution of information prepared and maintained by the Geology Division. This is accomplished through four offices: Map and Publication Sales, Geological Library, Cartographic Office, and Earth Science Information Center (ESIC). The Technical Services Section is composed of the geologic staff and technical support personnel. Its primary responsibilities are: 1) to search for and provide information on the State's mineral, fossil-fuel (oil, natural gas, coal, lignite, coalbed methane and coal seam natural gas), and water resources; 2) to encourage the orderly development of these resources; 3) to maintain current geologic map coverage of the State; and 4) to study and report on the geologic factors affecting the State's environment. It is divided into five major activities: Economic Geology, Mineral Exploration and Lignite Investigation, Subsurface Geology, Environmental and Areal Geology, and the Technical Support Group.

In addition to the major activities in the Technical Services Section, the Agency has several cooperative projects with the USGS. The AGC has three cooperative programs with the Water Resources Division of the USGS: Groundwater Survey Program, Stream Gauging Program (surface

water), and Water Quality Program. Each of these is a 50-50 cooperative program in which the costs are split, but with the majority of the work being done by USGS personnel using their equipment and facilities. These programs provide base-line water data to the public and other users of water data needed in management and protection activities. The selection of sample sites is coordinated with other government agencies that collect water data, in order to eliminate duplication and establish site selection priorities in strategic areas for the public welfare.



Agency Commentary

The Arkansas Geological Commission (AGC) was created by Act 16 of 1963. Agency activities are divided into three major sections: 1) Administrative Services, 2) Technical Services, and 3) Information Services. The activities are primarily supported by General Revenue Funds, except Map and Publication Sales which operate on a revolving cash fund, the Geology Learning Center, which is funded by donations. There are several federal grant funded programs which include the State Geological Mapping Program (STATEMAP) and National Coal Resources Data System (NCRDS) which operate under miscellaneous federal grants. The Arkansas Geological Commission participates in cooperative (matching at 50/50) water programs with the United States Geological Survey.

The Administrative Services Section supports the AGC with administrative, accounting, personnel, physical plant and vehicle maintenance.

The US Geological Survey (USGS), Central United State Earthquake Consortium (CUSEC), National Parks Service (NPS), National Earthquake Hazards Reduction Program (NEHRP), US Dept of Energy (DOE) and US Dept of Interior (DOI) all offer grant opportunities. The AGC is participating in more grants and is pursuing several research grants. Receiving additional grants results in an extreme need for a person to coordinate between administration and the technical staff, act as grant administrator for the agency and work with a database person to ensure grant research is stored and made available. AGC has the need for a position to provide this service. Solicitation and application for research grants, executing and tracking current grants would all be performed by this position. The position of Management Project Analyst II is requested for an annual salary of \$29,394 and appropriate matching amount.

The Vardelle Parham Geology Center on Roosevelt Road was built in 1970 and is the main site for the Geological Commission operations. The Norman Williams Core Repository, located at 1911 Thayer Street, is a steel warehouse structure built in the 1970's and acquired by this agency in 1990. The Thayer Street building houses drilling core specimens and a Learning Center which is used as an educational tour facility. Neither property has received maintenance on a routine basis. As a result there are several safety and deterioration issues. A request for Capital Improvement funds will be made to correct these deficiencies. To ensure that the properties are sufficiently maintained, we ask for a position of Work Maintenance Leader. This position would maintain grounds, vehicles, and plant mechanics, perform janitorial services and submit vehicle reports to DFA. The salary requested for this position is \$15,651 and applicable matching funds.

There is a vital need for Arkansas to fully participate in the American Association of State Geologists (AASG). Presently the Director only attends the annual meeting. The AASG conducts liaison meetings twice a year in Washington D.C. During the liaison meetings, contacts and negotiations regarding grant possibilities take place. Other geologic issues on a national level are discussed. The contacts made with Congress and Federal agencies at these liaison meetings greatly enhance the work we are trying to accomplish on a state level (i.e., earthquake research). An additional \$6,000 per year is requested for these semiannual trips to Washington DC.

The Technical Services Section (Geologic Staff) provides information on geology, mineral resources, and geohydrology of the State to the general public, other government agencies, and industry through the preparation, publication, and distribution of geologic maps and reports, personal contacts and public presentations. This activity encourages the orderly development of the State's mineral, fossil fuel (oil natural gas, coal, lignite, coalbed methane and coal seam natural gas), and ground-water resources through geochemical, geophysical, geological studies, and core drilling.

The Fayetteville Shale Gas Play has given Arkansas a unique opportunity for increased income for its citizens, and an increase in tax dollars. This opportunity reveals a need for information to be provided to the public. Arkansas must have a top researcher and expert in a position to provide information not only on the Fayetteville Shale but on other unconventional gas possibilities in Arkansas. There are other shale formations that have the potential to produce natural gas. This expert would research these potentials as well as the conventional gas formations that have produced and have possibilities of greater production. Other fossil fuel possibilities researched by this expert would be coal, coalbed methane, coal seam natural gas, and lignites. With the increased demand for information on fuels, we ask for the position of Sr. Petroleum Geologist. \$70,034 is requested for salary and the applicable amount of matching.

The New Madrid Seismic Zone (NMSZ) represents one of the most seismically active and hazardous zones in the eastern United States. Continued population growth and development in the area over the past century has exposed an ever-increasing number of people, buildings, bridges, and support infrastructure to significant seismic hazards. A large earthquake within the NMSZ has the potential to cause widespread loss of life and property damage in northeast Arkansas. The program will provide research information, maps, etc. for use by a variety of agencies, both public and private.

The Arkansas Geological Commission has applied for Federal Grants via the National Earthquake Hazards Reduction Program. To date, we have not received any of the Federal grants we have applied for. Two major reasons were given 1) Arkansas does not have a major urban center conspicuously near the NMSZ, thus the grant monies are going to the denser populations, 2) Arkansas does not have a centralized and standardized database of geotechnical and groundwater data necessary for seismic hazard maps.

The three primary aspects of the program will be to 1) collect, develop, and maintain large databases of information on the NMSZ, 2) conduct geologic and subsequent hazard mapping for selected 7.5' topographic quadrangles in northeast Arkansas, 3) educate the public about earthquake hazards.

The first aspect of the program is the acquisition and management of needed research data (groundwater and geotechnical) on the NMSZ. There currently exists a tremendous amount of valuable data scattered throughout various organizations and agencies, including the Arkansas Highway and Transportation Department. This data must first be converted into a usable format and placed into a standardized database for each type of data. A new position of Database Analyst is needed to collect, develop, and maintain these databases. Salary for this position of \$31,339 and appropriate matching is requested. To achieve the second aspect of the program, a Professional Geologist is needed to investigate and conduct geologic mapping in northeast Arkansas. A request for position salary of \$41,540 and appropriate matching is requested. In order to publish and make available in digital format updated high-quality surficial geologic and subsequent seismic hazard (soil amplification and liquefaction potential) maps, a position of Cartographer II is needed to aid in the digitization, compilation, and production of geologic field sheets. The requested salary for Cartographer II is \$23,575 and appropriate matching funds.

The AGC has three Cooperative Programs with the U.S. Geological Survey (USGS) Water Resources Division. These cooperative programs with the U.S. Geological Survey's Water Resources Division include 1) Stream Gauging Program (surface water), 2) Water Quality Program, and 3) Ground Water Survey. These programs provide for collection, evaluation and development of data relating to the State's surface and ground water resources. Information from these programs is important to the development and protection of the State's water supply and is critical to the agencies that regulate and manage the State's water resources. Specifically, these funds are used to collect and analyze surface and ground water samples (Water Quality Program); installation and monitoring of continuous-record stream gauging stations (Stream Gauging Program); and research in subsurface geology relating to ground water (Ground Water Survey). The Ground Water Survey will include regular water-level measurements of wells in the critical Sparta Aquifer in south Arkansas and the Quaternary Aquifer in east Arkansas. Extra Help in the amount of \$3,120 with associated matching along with \$6,454 in Operating Expenses is requested to restore appropriation to utilize funding provided by an MFG (Miscellaneous Federal Grant).

The Information Services Section's primary functions are preparation, storage, and distribution of data, reports, and maps prepared and maintained by the AGC. This is accomplished through the Map and Publication Sales Office, Geographic Information System and Cartography Office, Geological Library, Earth Science Information Center, and reception and telephone services. With the increasing demand for maps in digital format, we are, in an orderly fashion, digitizing the geology of Arkansas. Current geologic map coverage of the State is maintained and other geologic studies are conducted as needed. The geologic information compiled and maintained for these investigations is necessary for exploration, development, planning and protection for the mineral resources base of Arkansas and as the framework for numerous environmental studies. A technical support group assists the geologic staff in collecting, evaluating and preparing geologic data.

INFORMATION TECHNOLOGY

The following requests are made to enable the agency to continue to provide geologic and natural resource information to the public and other government agencies in an electronic format. An increase of \$7,000 is requested in FY08 in Capital Outlay for the procurement of a server backup. In both years of the biennium a Capital Outlay request for software upgrades is made. \$7,000 in FY08 and \$7,500 in FY09 is the amount of that request. An increase in Professional Fees of \$500 during FY 08 and \$1,000 for FY09 is requested for maintenance of the LAN and installation of a backup to the server.

A request is made for the position of Information System Planner. Ever increasing volume of graphic information in our computer files, need for an individual to maintain our server, the workstations, and address IT reporting and other IT related issues, initiate this request. This position would also oversee the work of the Database Analyst who would be working primarily in the Technical Services section. A request for salary of \$33,354 and appropriate matching funds is made.

MAP RESALE

The Map Resale appropriation provides for the authorization to operate from a revolving cash fund, using a portion of the money collected from the sale of maps, publications and reproduction charges. There is no request for appropriation beyond base level.

STATEMAP - STATE GEOLOGIC MAPPING PROGRAM

The funds for Statemap (State Geologic Mapping Program) are federal funds (USGS) which pay for the salary of one field geologist and an extra help position to conduct geologic field studies and mapping in Arkansas. The program involves the geologic mapping of areas of the State selected by the Commission. This is a cooperative effort between the AGC and the USGS and is part of the National Geologic Mapping effort to standardize the quality of geologic mapping in the United States. This project will aid in the development and management of the mineral resources of the area and greatly expand the knowledge of the geology of the State. There are no Change Level requests for this appropriation above Base Level.

MUSEUM EXPENSES (GEOLOGY LEARNING CENTER) - CASH

This appropriation provides for the authorization to spend money donated to the AGC Geology Learning Center (GLC). The GLC is part of the educational arm of the Agency with the purpose of giving students and citizens of all ages exposure to rocks, minerals, fossils, and fossil fuels. The GLC has 5 display areas and receives funding and exhibit material from donations. There are no Change Level requests for this appropriation above Base Level.

Audit Findings

DIVISION OF LEGISLATIVE AUDIT
AUDIT OF :
ARKANSAS GEOLOGICAL COMMISSION
FOR THE YEAR ENDED JUNE 30, 2004

Findings	Recommendations
None	None

Employment Summary

	Male	Female	Total	%
White Employees	14	7	21	95 %
Black Employees	0	1	1	5 %
Other Racial Minorities	0	0	0	0 %
Total Minorities			1	5 %
Total Employees			22	100 %

Publications

A.C.A 25-1-204

Name	Statutory Authorization	Required for		# Of Copies	Reason (s) for Continued Publication and Distribution
		Governor	General Assembly		
None	N/A	N	N	0	N/A

Department Appropriation

Historical Data

Agency Request and Executive Recommendation

Appropriation	2005-2006		2006-2007		2006-2007		2007-2008				2008-2009			
	Actual	Pos	Budget	Pos	Authorized	Pos	Agency	Pos	Executive	Pos	Agency	Pos	Executive	Pos
166 Geology-State Operations	1,435,315	21	1,467,327	21	1,466,735	21	1,827,171	28	1,482,795	21	1,821,171	28	1,482,795	21
169 Geology Map Resale	85,480	0	100,000	0	100,000	0	100,000	0	100,000	0	100,000	0	100,000	0
210 State Geologic Mapping Program	70,216	1	63,717	1	53,859	1	64,101	1	64,101	1	64,101	1	64,101	1
873 Geology Museum - Treasury	0	0	9,025	0	9,025	0	9,025	0	9,025	0	9,025	0	9,025	0
Total	1,591,011	22	1,640,069	22	1,629,619	22	2,000,297	29	1,655,921	22	1,994,297	29	1,655,921	22

Funding Sources		%		%		%		%		%		%
Fund Balance 4000005	38,967	2.4	59,808	3.5	49,783	2.4	49,783	2.9	39,758	2.0	39,758	2.4
General Revenue 4000010	1,411,835	85.5	1,457,864	86.3	1,827,171	89.6	1,482,795	87.4	1,821,171	90.0	1,482,795	88.0
Federal Revenue 4000020	70,216	4.3	63,717	3.8	64,101	3.1	64,101	3.8	64,101	3.2	64,101	3.8
Non-Revenue Receipts 4000040	106,298	6.4	90,000	5.3	90,000	4.4	90,000	5.3	90,000	4.4	90,000	5.3
Cash Fund 4000045	23	0.0	9,000	0.5	9,000	0.5	9,000	0.6	9,000	0.4	9,000	0.5
Merit Adjustment Fund 4000055	4,740	0.3	9,463	0.6	0	0.0	0	0.0	0	0.0	0	0.0
DFA Motor Vehicle Acquisition 4000184	18,740	1.1	0	0.0	0	0.0	0	0.0	0	0.0	0	0.0
Total Funds	1,650,819	100.0	1,689,852	100.0	2,040,055	100.0	1,695,679	100.0	2,024,030	100.0	1,685,654	100.0
Excess Appropriation/(Funding)	(59,808)		(49,783)		(39,758)		(39,758)		(29,733)		(29,733)	
Grand Total	1,591,011		1,640,069		2,000,297		1,655,921		1,994,297		1,655,921	

The Budgeted amount for Geology - State Operations (166) exceeds the Authorized amount due to salary adjustments during the 2005-07 biennium. The Budgeted amount for the State Geologic Mapping Program (210) exceeds the Authorized amount due to the establishment of a Miscellaneous Federal Grant.

BEFORE PROPOSED MERGER

Agency Position Usage Report

FY2004-2005						FY2005-2006						FY2006-2007					
Authorized in Act	Budgeted			Unbudgeted	% of Authorized Unused	Authorized in Act	Budgeted			Unbudgeted	% of Authorized Unused	Authorized in Act	Budgeted			Unbudgeted	% of Authorized Unused
	Filled	Unfilled	Total	Total			Filled	Unfilled	Total	Total			Filled	Unfilled	Total	Total	
24	21	1	22	2	12.50%	22	20	2	22	0	9.09%	22	22	0	22	0	0.00%

Analysis of Budget Request

Appropriation: 166 - Geology-State Operations

Funding Sources: HUA-Miscellaneous Agencies Fund

The Arkansas Geological Commission's appropriation for State Operations is funded entirely by General Revenues. In this program, data is accumulated, analyzed, and disseminated to provide knowledge of the geology and hydrogeology of the State to stimulate orderly development and encourage effective management and utilization of the State's mineral, fossil fuel, and water resources in an environmentally responsible manner.

A cost of living increase is not incorporated in Base Level pending the outcome of the Classification and Compensation Study. The Base Level request of \$889,328 for FY08 and \$889,328 for FY09 for Regular Salaries does include board member Stipend payments. FY07 salary levels have been held flat each year for all incumbents. Personal Services Matching reflects increases in the Base Level due to the Social Security Tax Maximum income limit and certain increase in Worker's Compensation and Unemployment Tax rates. Personal Services Matching also includes a \$30 increase in the monthly contribution for State employee's health insurance for a total State match per budgeted employee of \$350 per month.

The Base Level request for the Agency is \$1,482,795 for both years of the 2007-09 biennium. The Change Level requests include the following:

1. Personnel related Change Levels include seven (7) positions and associated match:
 - One (1) Senior Petroleum Geologist grade 24, \$70,034 for each year. Responsibilities would include researching natural gas and other fossil fuel production possibilities, and to be the expert to provide information on the Fayetteville Shale.
 - One (1) Professional Geologist grade 22, \$41,540 for each year to investigate and conduct geologic mapping in Northeast Arkansas. Also, the position is intended to build programs necessary to gain federal grants.
 - One (1) Information Systems Planner grade 22 \$33,354 for each year to maintain server and workstations, address IT needs, and oversee the Database Analyst position.
 - One (1) Data Base Analyst grade 21 \$31,339 for each year to collect, develop, and maintain databases. Also, the position is intended to build programs necessary to gain federal grants.
 - One (1) Management Project Analyst II grade 20, \$29,394 for each year to perform the functions of solicitation and application for research grants, executing and tracking current grants, coordinate between administration and technical staff, and serve as grant administrator.
 - One (1) Cartographer II grade 13, \$23,575 for each year that would digitize, compile, and produce geologic field sheets. Also, the position is intended to build programs necessary to gain federal grants.
 - One (1) Work Maintenance Leader grade 10, \$15,651 for each year to maintain grounds, vehicles, and plant mechanics. Also, the position would severe various janitorial and maintenance functions.

2. Non personnel related Change Levels:

- Existing Program Increase of \$6,000 in Conference Fees and Travel for each year of the biennium. Increase will allow for the Agency Director to travel to Washington D.C.
- Increase of \$500 in FY08 and \$1,000 in FY09 for Professional Fees for each year will be used to maintain Agency server.
- Technology related increase in Capital Outlay of \$14,000 for FY08 and \$7,500 for FY09 will be used in line with the Agency Information Technology Plan to purchase a server back up hardware and software upgrades.
- General Improvement Funding is requested to correct safety and deterioration problems with Agency facilities.

The Executive Recommendation provides for the transfer of all operations and appropriations of the Arkansas Geological Commission to the Oil and Gas Commission as the Oil and Gas Commission - Division of Geology. Further, the Executive Recommendation for this appropriation is Base Level. In addition, the Executive Recommendation provides for \$150,000 in General Improvement funding to be distributed to the Division. This funding will be used to make repairs and renovations to facilities that house the Geology Division which are essential for the Agency to continue current operations.

Appropriation

Appropriation: 166 Geology-State Operations
Funding Sources: HUA-Miscellaneous Agencies Fund

Historical Data

Agency Request and Executive Recommendation

Commitment Item	2005-2006	2006-2007	2006-2007	2007-2008			2008-2009		
	Actual	Budget	Authorized	Base Level	Agency	Executive	Base Level	Agency	Executive
Regular Salaries 5010000	862,288	889,328	884,925	889,328	1,134,215	889,328	889,328	1,134,215	889,328
#Positions	21	21	21	21	28	21	21	28	21
Extra Help 5010001	7,847	12,000	12,000	12,000	12,000	12,000	12,000	12,000	12,000
#Extra Help	2	20	20	20	20	20	20	20	20
Personal Services Matching 5010003	242,083	253,632	257,443	269,100	348,089	269,100	269,100	348,089	269,100
Operating Expenses 5020002	144,746	150,256	150,256	150,256	150,256	150,256	150,256	150,256	150,256
Conference & Travel Expenses 5050009	4,000	4,000	4,000	4,000	10,000	4,000	4,000	10,000	4,000
Professional Fees 5060010	5,000	7,500	7,500	7,500	8,000	7,500	7,500	8,500	7,500
Data Processing 5090012	0	0	0	0	0	0	0	0	0
Capital Outlay 5120011	0	0	0	0	14,000	0	0	7,500	0
Water Quality Program 5900046	31,855	31,855	31,855	31,855	31,855	31,855	31,855	31,855	31,855
Stream Gauging 5900047	38,300	38,300	38,300	38,300	38,300	38,300	38,300	38,300	38,300
Ground Water Survey 5900048	54,456	54,456	54,456	54,456	54,456	54,456	54,456	54,456	54,456
Mineral Explore/Lignite Invest 5900050	44,740	26,000	26,000	26,000	26,000	26,000	26,000	26,000	26,000
Total	1,435,315	1,467,327	1,466,735	1,482,795	1,827,171	1,482,795	1,482,795	1,821,171	1,482,795
Funding Sources									
General Revenue 4000010	1,411,835	1,457,864		1,482,795	1,827,171	1,482,795	1,482,795	1,821,171	1,482,795
Merit Adjustment Fund 4000055	4,740	9,463		0	0	0	0	0	0
DFA Motor Vehicle Acquisition 4000184	18,740	0		0	0	0	0	0	0
Total Funding	1,435,315	1,467,327		1,482,795	1,827,171	1,482,795	1,482,795	1,821,171	1,482,795
Excess Appropriation/(Funding)	0	0		0	0	0	0	0	0
Grand Total	1,435,315	1,467,327		1,482,795	1,827,171	1,482,795	1,482,795	1,821,171	1,482,795

The FY07 Budgeted amount in Regular Salaries exceeds the authorized amount due to salary adjustments during the 2005-07 biennium.

BEFORE PROPOSED MERGER

Change Level by Appropriation

Appropriation: 166-Geology-State Operations
Funding Sources: HUA-Miscellaneous Agencies Fund

Agency Request

Change Level		2007-2008	Pos	Cumulative	% of BL	2008-2009	Pos	Cumulative	% of BL
BL	Base Level	1,482,795	21	1,482,795	100.0	1,482,795	21	1,482,795	100.0
C01	Existing Program	241,841	5	1,724,636	116.3	242,341	5	1,725,136	116.3
C02	New Program	96,035	2	1,820,671	122.7	96,035	2	1,821,171	122.8
C03	Discontinue Program	(7,500)	0	1,813,171	122.2	(7,500)	0	1,813,671	122.3
C08	Technology	14,000	0	1,827,171	123.2	7,500	0	1,821,171	122.8

Executive Recommendation

Change Level		2007-2008	Pos	Cumulative	% of BL	2008-2009	Pos	Cumulative	% of BL
BL	Base Level	1,482,795	21	1,482,795	100.0	1,482,795	21	1,482,795	100.0
C01	Existing Program	0	0	1,482,795	100.0	0	0	1,482,795	100.0
C02	New Program	0	0	1,482,795	100.0	0	0	1,482,795	100.0
C03	Discontinue Program	0	0	1,482,795	100.0	0	0	1,482,795	100.0
C08	Technology	0	0	1,482,795	100.0	0	0	1,482,795	100.0

Justification

C01	Increase for salaries for new positions to carry out the Agency mission; Director travel to Washington DC; Professional Fees for maintenance of server
C02	An increase for salaries for new positions necessary for Earthquake Research Program
C03	To correct inaccurate Cost Element designation
C08	An increase for server back up hardware and software upgrades

Analysis of Budget Request

Appropriation: 169 - Geology Map Resale

Funding Sources: MWA-Geology Map Resale Revolving Fund

Funding for the Arkansas Geological Commission's Map Resale appropriation is obtained from the sale of geological and topographical maps to the general public. These proceeds are deposited into the Agency's revolving fund, as authorized in A.C.A. § 19-4-1804.

The Agency finds the Base Level continuation of \$100,000 for this program to be sufficient to achieve the mission of this program for the 2007-09 biennium.

The Executive Recommendation provides for the transfer of all operations and appropriations of the Arkansas Geological Commission to the Oil and Gas Commission as the Oil and Gas Commission - Division of Geology. Further, the Executive Recommendation for this appropriation is Base Level.

Appropriation

Appropriation: 169 Geology Map Resale
Funding Sources: MWA-Geology Map Resale Revolving Fund

Historical Data

Agency Request and Executive Recommendation

Commitment Item	2005-2006	2006-2007	2006-2007	2007-2008			2008-2009		
	Actual	Budget	Authorized	Base Level	Agency	Executive	Base Level	Agency	Executive
Resale Revolving Fund 5900046	85,480	100,000	100,000	100,000	100,000	100,000	100,000	100,000	100,000
Total	85,480	100,000	100,000	100,000	100,000	100,000	100,000	100,000	100,000
Funding Sources									
Fund Balance 4000005	38,292	59,110		49,110	49,110	49,110	39,110	39,110	39,110
Non-Revenue Receipts 4000040	106,298	90,000		90,000	90,000	90,000	90,000	90,000	90,000
Total Funding	144,590	149,110		139,110	139,110	139,110	129,110	129,110	129,110
Excess Appropriation/(Funding)	(59,110)	(49,110)		(39,110)	(39,110)	(39,110)	(29,110)	(29,110)	(29,110)
Grand Total	85,480	100,000		100,000	100,000	100,000	100,000	100,000	100,000

BEFORE PROPOSED MERGER

Analysis of Budget Request

Appropriation: 210 - State Geologic Mapping Program

Funding Sources: FAL-Geology-Federal

The Geological Commission's State Geologic Mapping Program is funded solely by federal revenues. The primary functions for this program are to coordinate collection of data and formulation of maps displaying the location and quantity of minerals in specific areas of the State.

A cost of living increase is not incorporated in Base Level pending the outcome of the Classification and Compensation Study. FY07 salary levels have been held flat each year. Personal Services Matching reflects increases in the Base Level due to the Social Security Tax Maximum income limit and certain increase in Worker's Compensation and Unemployment Tax rates. Personal Services Matching also includes a \$30 increase in the monthly contribution for State employee's health insurance for a total State match per budgeted employee of \$350 per month.

The Agency Base Level request is \$54,286 for each year of the 2007-09 biennium, as well as, a Change Level restoration of \$9,815 for each year through the transfer authority from the Miscellaneous Federal Grant Holding Account in FY07. The restoration request includes \$3,120 in Extra Help, Match \$241, and Operating Expenses \$6,454. The increases are funded through an already existing MFG that will continue through the 2007-09 biennium. Also, the increases will allow for the Agency to achieve the goals of the grant, and provide for a greater amount of information to be collected and recorded.

The Executive Recommendation provides for the transfer of all operations and appropriations of the Arkansas Geological Commission to the Oil and Gas Commission as the Oil and Gas Commission - Division of Geology. Further, the Executive Recommendation for this appropriation provides for Agency Request.

Appropriation

Appropriation: 210 State Geologic Mapping Program
Funding Sources: FAL-Geology-Federal

Historical Data

Agency Request and Executive Recommendation

Commitment Item		Historical Data			Agency Request and Executive Recommendation			Agency Request and Executive Recommendation		
		2005-2006 Actual	2006-2007 Budget	2006-2007 Authorized	2007-2008			2008-2009		
					Base Level	Agency	Executive	Base Level	Agency	Executive
Regular Salaries	5010000	29,555	33,335	33,353	33,335	33,335	33,335	33,335	33,335	33,335
#Positions		1	1	1	1	1	1	1	1	1
Extra Help	5010001	20,070	6,835	3,715	3,715	6,835	6,835	3,715	6,835	6,835
#Extra Help		2	2	2	2	2	2	2	2	2
Personal Services Matching	5010003	12,707	11,093	10,791	11,236	11,477	11,477	11,236	11,477	11,477
Operating Expenses	5020002	7,884	12,454	6,000	6,000	12,454	12,454	6,000	12,454	12,454
Conference & Travel Expenses	5050009	0	0	0	0	0	0	0	0	0
Professional Fees	5060010	0	0	0	0	0	0	0	0	0
Data Processing	5090012	0	0	0	0	0	0	0	0	0
Capital Outlay	5120011	0	0	0	0	0	0	0	0	0
Total		70,216	63,717	53,859	54,286	64,101	64,101	54,286	64,101	64,101
Funding Sources										
Federal Revenue	4000020	70,216	63,717		54,286	64,101	64,101	54,286	64,101	64,101
Total Funding		70,216	63,717		54,286	64,101	64,101	54,286	64,101	64,101
Excess Appropriation/(Funding)		0	0		0	0	0	0	0	0
Grand Total		70,216	63,717		54,286	64,101	64,101	54,286	64,101	64,101

FY06 Actual and FY07 Budgeted in Extra Help, Personal Services Matching and Operating Expenses exceed Authorized due to the establishment of a Miscellaneous Federal Grant.

BEFORE PROPOSED MERGER

Change Level by Appropriation

Appropriation: 210-State Geologic Mapping Program

Funding Sources: FAL-Geology-Federal

Agency Request

Change Level		2007-2008	Pos	Cumulative	% of BL	2008-2009	Pos	Cumulative	% of BL
BL	Base Level	54,286	1	54,286	100.0	54,286	1	54,286	100.0
C06	Restored Position	9,815	0	64,101	118.0	9,815	0	64,101	118.0

Executive Recommendation

Change Level		2007-2008	Pos	Cumulative	% of BL	2008-2009	Pos	Cumulative	% of BL
BL	Base Level	54,286	1	54,286	100.0	54,286	1	54,286	100.0
C06	Restored Position	9,815	0	64,101	118.0	9,815	0	64,101	118.0

Justification

C06	Increase appropriation due to Miscellaneous Federal Grant for Extra Help, Match, and Operating Expenses.
-----	--

Analysis of Budget Request

Appropriation: 873 - Geology Museum - Treasury

Funding Sources: NGC-Cash in Treasury

The Geology Museum and Learning Center (GLC) is funded by proceeds of donations collected by the Commission. The GLC is part of the educational arm of the Agency with the purpose of giving students and citizens of all ages exposure to rocks, minerals, fossils, and fossil fuels through its five (5) display areas. The Base Level for this program is \$9,025 each year.

The Agency requests the continuation of this program at Base Level.

The Executive Recommendation provides for the transfer of all operations and appropriations of the Arkansas Geological Commission to the Oil and Gas Commission as the Oil and Gas Commission - Division of Geology. Further, the Executive Recommendation for this appropriation is Base Level.

Appropriation

Appropriation: 873 Geology Museum - Treasury
Funding Sources: NGC-Cash in Treasury

Historical Data

Agency Request and Executive Recommendation

Commitment Item	2005-2006	2006-2007	2006-2007	2007-2008			2008-2009		
	Actual	Budget	Authorized	Base Level	Agency	Executive	Base Level	Agency	Executive
Museum Expenses 5900046	0	9,025	9,025	9,025	9,025	9,025	9,025	9,025	9,025
Total	0	9,025	9,025	9,025	9,025	9,025	9,025	9,025	9,025
Funding Sources									
Fund Balance 4000005	675	698		673	673	673	648	648	648
Cash Fund 4000045	23	9,000		9,000	9,000	9,000	9,000	9,000	9,000
Total Funding	698	9,698		9,673	9,673	9,673	9,648	9,648	9,648
Excess Appropriation/(Funding)	(698)	(673)		(648)	(648)	(648)	(623)	(623)	(623)
Grand Total	0	9,025		9,025	9,025	9,025	9,025	9,025	9,025

BEFORE PROPOSED MERGER